



OFFICE SUITES

450 Monroe Tpke, Monroe
Multiple Units Available

FOR LEASE

Various Sizes
\$17.00/sf + utilities



PRIME OFFICE SUITES IN MONROE

Second floor offices, accessible via elevator or stairs. Well-maintained common areas and many long-standing retail, restaurants and office tenants in the facility. Attractive corner lot at the busy intersection of Monroe Turnpike (Route 11) and Elm Street.

Unit 109 – 582 SF; Beautiful large single office suite with some cabinetry. Ideal for a company that desires an open layout. The space can possibly be expanded in size.

Unit 112 – 2,117 SF; Bright, front corner unit consisting of a large studio (now used for photography), 3 private offices, and a large work area. Ideal for office use, art studio, recreation or dance. Expansion potential to create additional square footage, if needed.

The information above has been obtained from sources believed reliable. While we do not doubt its accuracy we have not verified it and make no guarantee, warranty or representation about it.



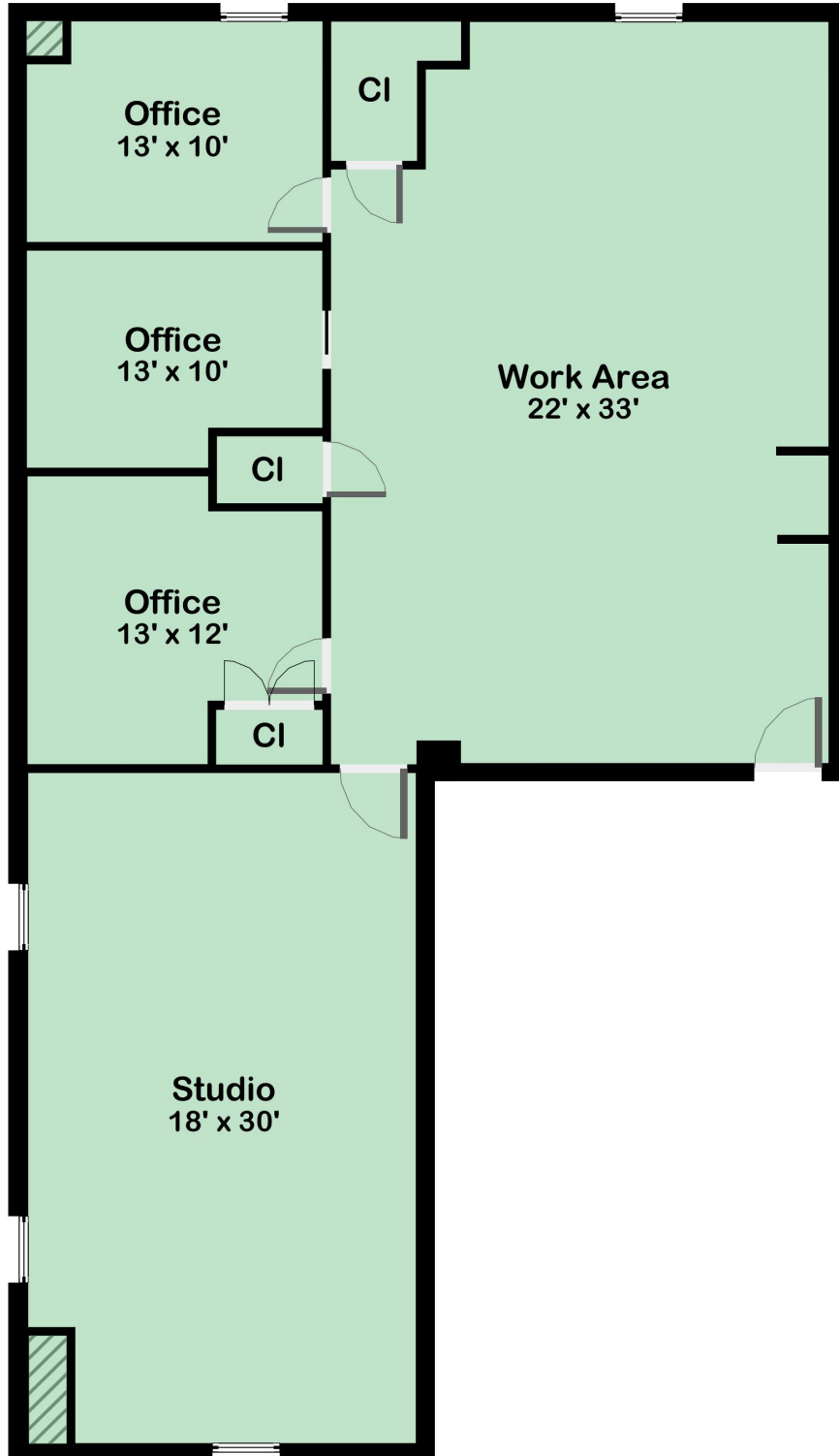
Steve Hodson/Hodson Realty, Inc.
6515 Main St., Trumbull, Ct. 06611
Ph: 203-260-1369
Steve@HodsonRealty.com
www.HodsonCommercial.com



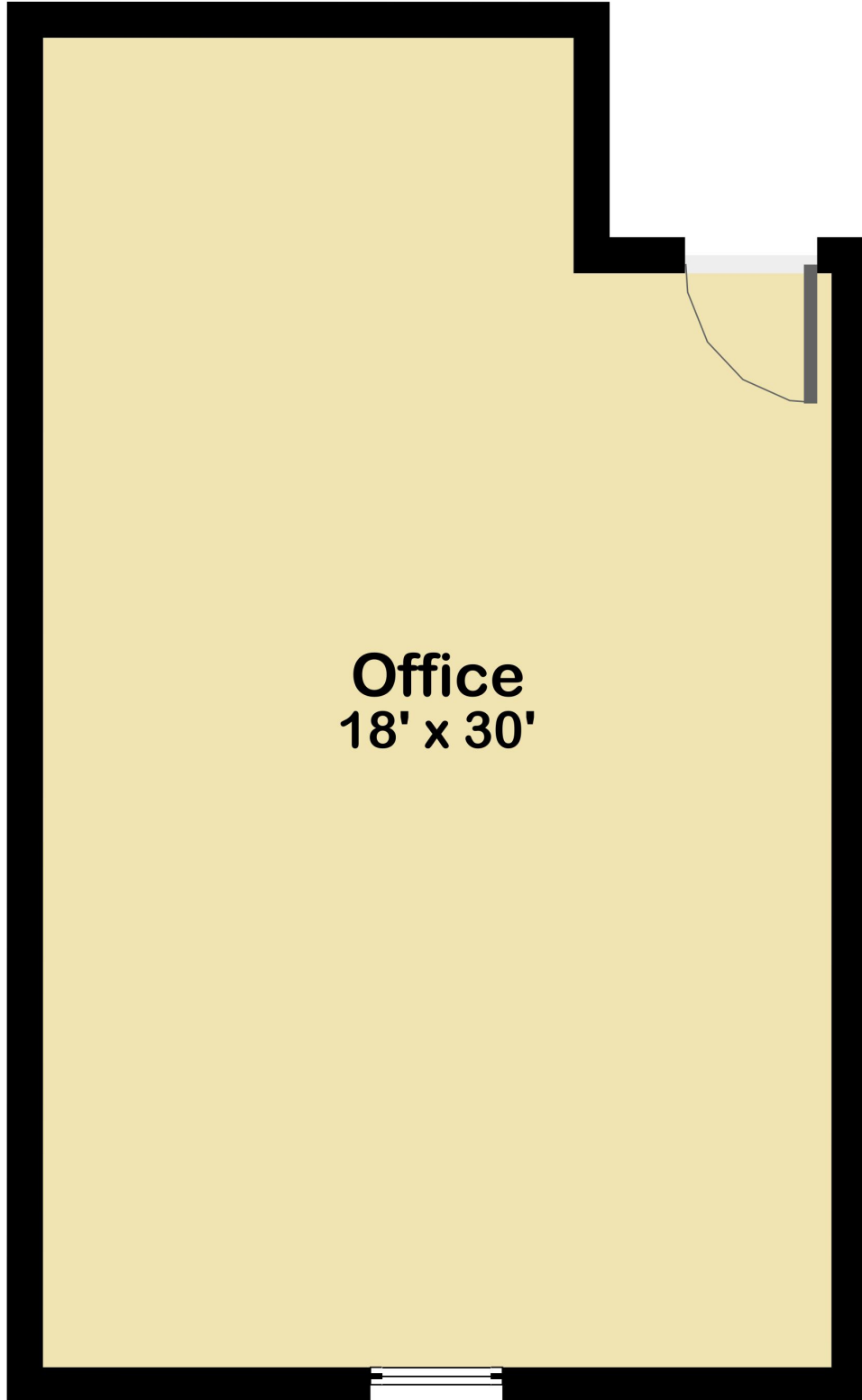
Integrity. Quality. Experience. Service.

: LOOR PLAN

Unit 112



Unit 109



Office
18' x 30'