



OFFICE SUITE

450 Monroe Tpke, Monroe
2nd Floor Unit

FOR LEASE

2,117 sf
\$17.00/sf + utilities



PRIME OFFICE SUITE IN MONROE

Second floor office, accessible via elevator or stairs. Well-maintained common areas and many long-standing retail, restaurants and office tenants in the facility. Attractive corner lot at the busy intersection of Monroe Turnpike (Route 11) and Elm Street.

Unit 112 – 2,117 SF; Bright, front corner unit consisting of a large studio (now used for photography), 3 private offices, and a large work area. Ideal for office use, art studio, recreation or dance. Expansion potential to create additional square footage, if needed.

The information above has been obtained from sources believed reliable. While we do not doubt its accuracy we have not verified it and make no guarantee, warranty or representation about it.



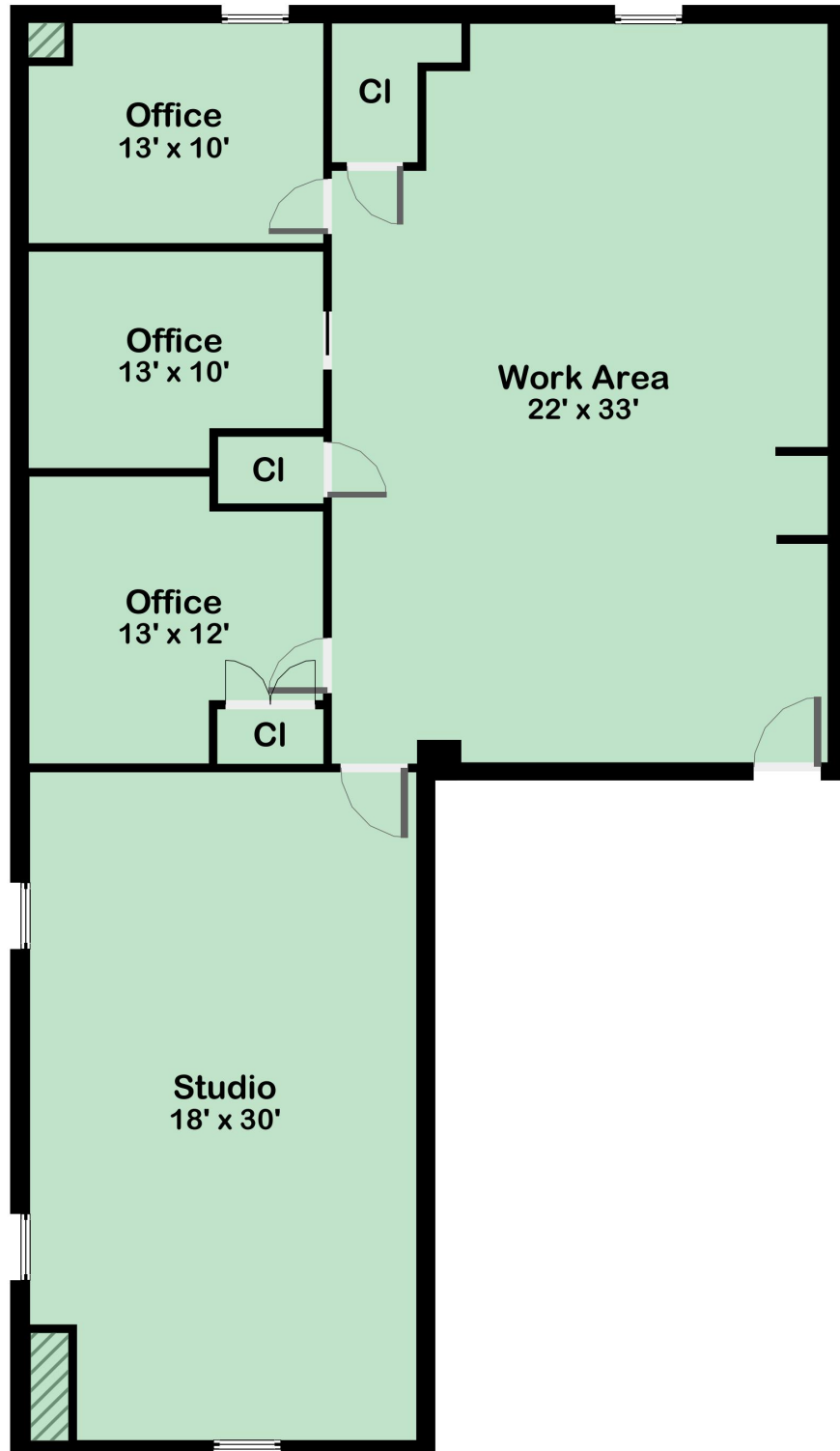
Steve Hodson/Hodson Realty, Inc.
6515 Main St., Trumbull, Ct. 06611
Ph: 203-260-1369
Steve@HodsonRealty.com
www.HodsonCommercial.com



Integrity. Quality. Experience. Service.

: LOOR PLAN

Unit 112



Unit 109

