



Professional Office Space for Lease

525 Bridgeport Avenue, Shelton
2 Suites Available



PROFESSIONAL OFFICE SPACE FOR LEASE

Location has excellent access to Route 8, between Exits 12 & 13 and great visibility on Bridgeport Avenue, including signage. Excellent opportunity for attorney, accountant, contractor, engineering, medical or other office use. Building has elevator.

Suite 102: 498 SF - \$950/month

First floor professional office space, recently remodeled and in move-in condition. Formerly used as a therapist office. Consists of 2 private offices and reception area which could be used as an office.

Suite 202: 337 SF - \$800/month

Second floor professional office includes 2 private offices. To be remodeled.

Lease Rates are Full Gross including all utilities

The information above has been obtained from sources believed reliable. While we do not doubt its accuracy we have not verified it and make no guarantee, warranty or representation about it.

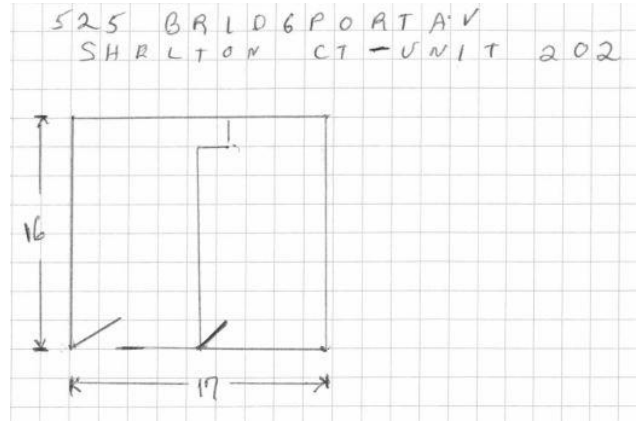
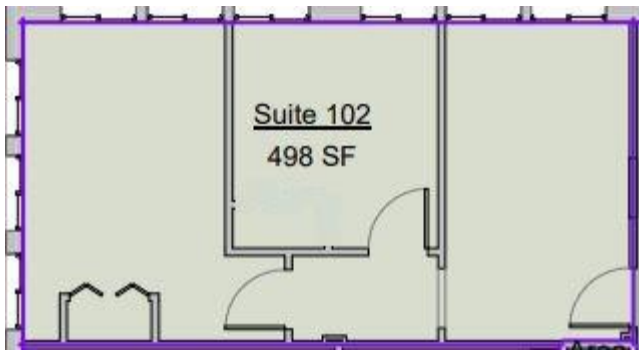


Mark Yash/Hodson Realty, Inc.
6515 Main St. , Trumbull, Ct. 06611
Ph: 203-268-7743
Cell: 203-209-6713
Mark@HodsonRealty.com
www.HodsonCommercial.com



Integrity. Quality. Experience. Service.

Floor Plans



Suite 102



Suite 202



Front Entrance



Rear Entrance - Handicap access

